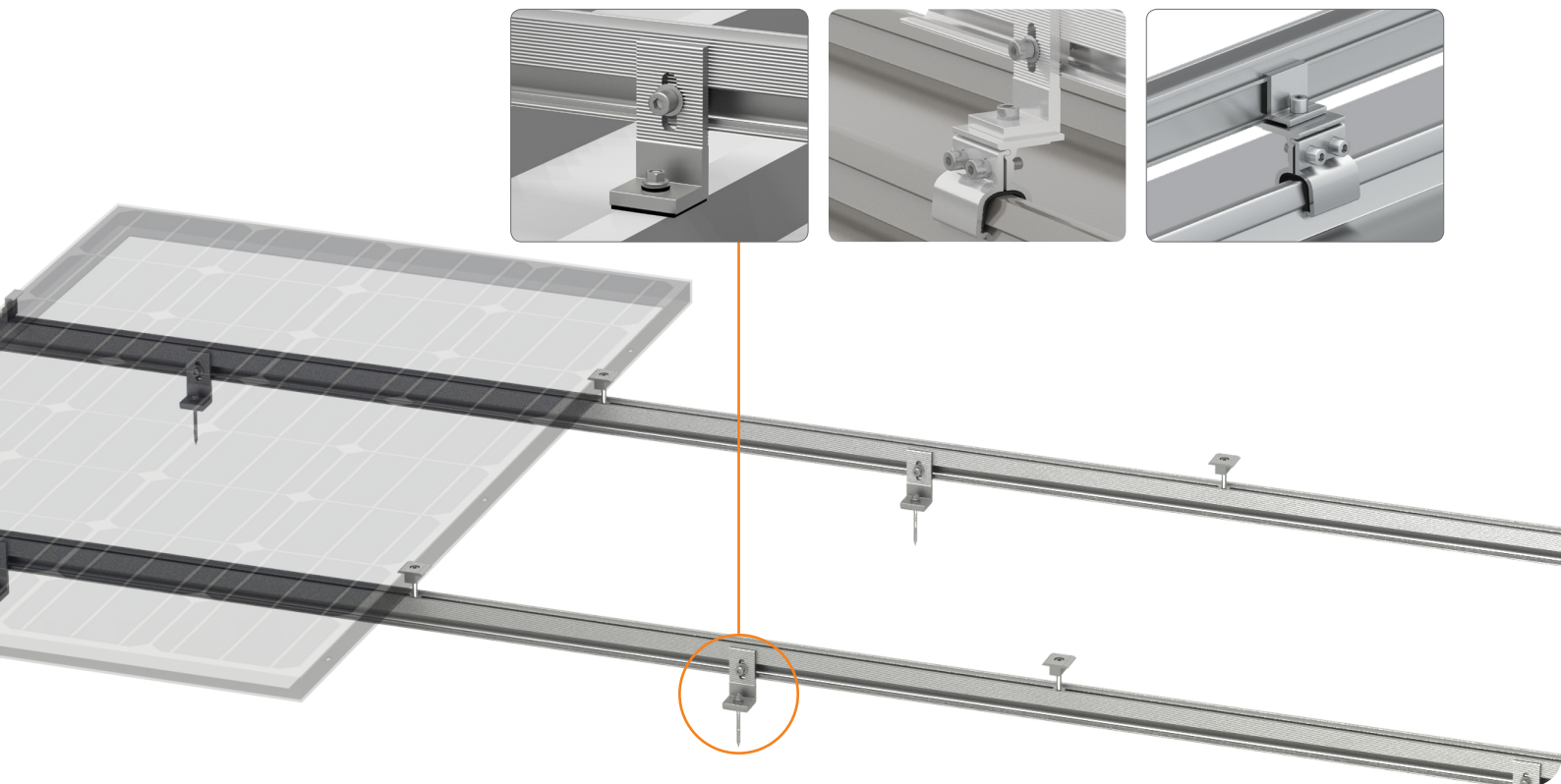
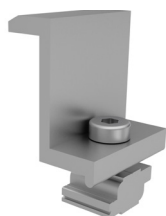


## Main Benefits

- Quick and Easy Installation
- Versatile Klip-lok Interface



Item	Part Number	Description	Torque (N·m.)
1	ER-EC-ST35	PV-ezRack End Clamp, Standard 35mm	M8: 16-20 N·m.
2	ER-IC-ST35/U18	PV-ezRack Module Inter Clamp, Standard, for Frame Height 32-35mm with 18mm U-shape profile	M8: 16-20 N·m.
3	ER-SP-ECO/150	PV-ezRack Splice for ECO Rail 150mm	M8: 10-12 N·m.
4	All Kliplok	PV-ezRack SolarRoof, Interface for Standing Seam 20 Klip- Lok Roofs(with threaded hole)	M8: 16-20 N·m.
5	L feet on kliplok	PV-ezRack SolarRoof, Tin Interface with M8x28 Bolt and for Threaded Holes	M8: 16-20 N·m.
6	EZ-GL-STII	PV-ezRack Grounding Lug II	M8: 16-20 N·m. M6: 5-6 N·m.



**ER-EC-ST30/35/40/45**  
End Clamp



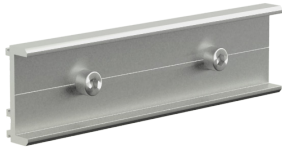
**ER-IC-ST35(40)/U18**  
Inter Clamp



**CRC-R/ECO**  
Cross Connector Clamp of ECO-  
Rail without Bolt



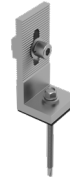
**ER-R-ECO/4200/5200**  
ECO Rail



**ER-SP-ECO**  
Splice for ECO Rail



**I-05-8/28/TH**  
Tin Interface with M8x28-Bolt



**I-05/6.3/85/CS**  
Tin Interface with Carbon Steel Self-drilling Screw 6.3x85 for metal purlin



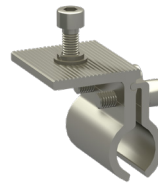
**ER-I-05/HB/MP**  
Tin Interface M8x150 SUS304 with Blue White Zinc Coating



**ER-I-51/SM6.3/25**  
Tile Interface



**ER-I-13-TH**  
Klip-lok Interface for Hidden 26



**ER-I-16-TH**  
Klip lok interface for standing seam 22



**ER-I-18-TH**  
Interface for Standing Seam 20



**ER-I-20A-TH**  
Klip-lok interface for Angularity 18A



**ER-I-31/45/M8**  
Klip-lok Interface 400-700HS



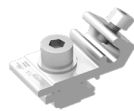
**ER-I-32/45/M8**  
Klip-lok Interface 406 with U-opening



**ER-TL-10/15/6.3/85**  
Tilt legs, adjustable 10-15 degree



**TL-10/15/L/PS/6.3/85**  
Tilt Leg with L-feet, Adjustable, 10-15 Degree, Pre-assembled



**EZ-GL-STII**  
Grounding Lug II



**EZ-GC-ST**  
Grounding Clip



**EZ-CC-PV/2**  
Universal Cable Clip for PV Panels for holding 2 cables



**CC-R/ECO/6**  
AL Cable clip for ECO rail



Distributor Outlets



**Clenergy Thailand**

9/2, 5th Floor, Vorasin Building, Soi Yasooob 2, Viphavadee-Rungsit Road, Chomphon Sub-district, Chatuchak District, Bangkok 10900  
Tel: +66 (0) 2 277 5201, +66 (0) 6 3228-0200  
E-mail: sales\_th@clenergy.com, support\_th@clenergy.com  
[www.clenergythailand.com](http://www.clenergythailand.com)

**Check out our SolarRoof ECO rail system installation video:**

Residential Solar Project: <https://youtu.be/8YnbLzo7Mtk>  
Commercial Solar Project: <https://youtu.be/6FFYZJwNBDw>

Material AL6005 T5 anodised 10-12 micron.

A full standard pallet for parts is 1200\*1100\*1800mm  
A full standard pallet for 4.2m rails is 4200\*1100\*1000mm  
A full standard pallet for 5.2m rails is 5200\*1100\*1000mm