

Clenergy China

999-1009 Min'an Rd, Huoju Hi-tech Ind. Dev. Zone
Xiang'an District 361101, Xiamen, Fujian, China
Tel: +86 592 311 0088 Fax: +86 592 599 5028
E-mail: sales@clenergy.com.cn www.clenergy.com.cn

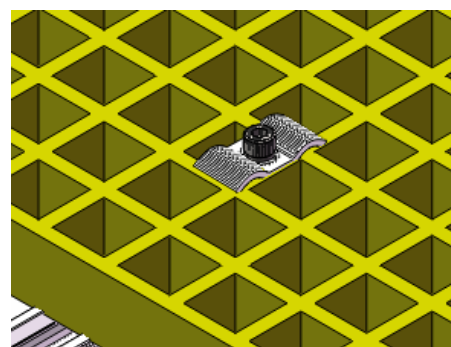
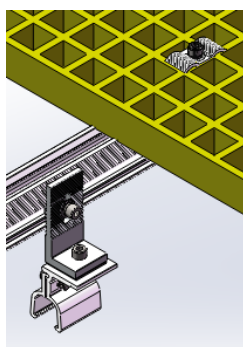
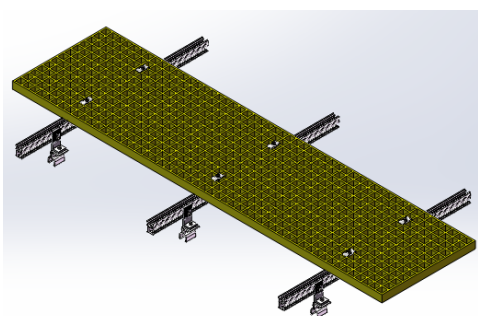


Walkway

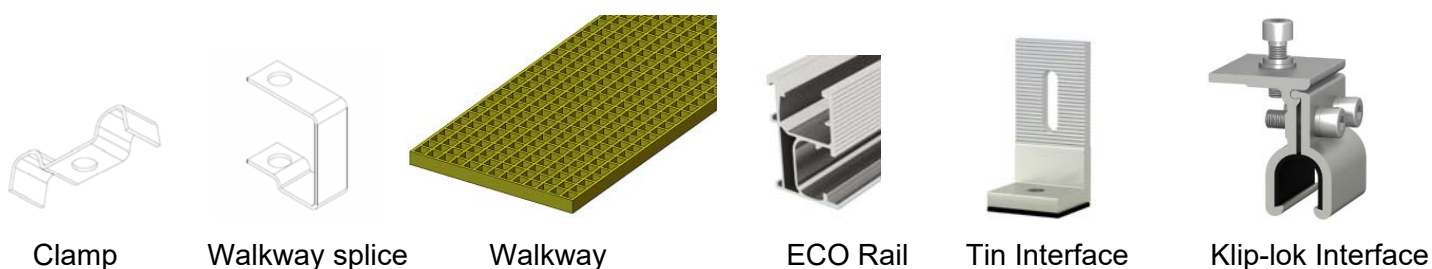
Material: Fiberglass Reinforced Plastic

Walkway is fairly useful for a photovoltaic system, which not only makes Mounting and Maintenance easier, but also protect roofs during walking. Our Walkway can be compatible with all our products: ECO Rail, DS Rail, L-feet, etc. To be more versatile, we offer multiple choice of length, width and coating thickness.

Assembly



Component



Clamp

Walkway splice

Walkway

ECO Rail

Tin Interface

Klip-lok Interface

Specification:

Application	For Clenergy Mounting Structure only
Fixing method	Fixing on the Rail with Z-Modules and Hexagonal Bolts
Requirements	The static load per square meter should be less than 500KG
Dimensions	L2000mm*W400mm*H38mm
Material	Fiberglass Reinforced Plastic
Color	Yellow