



# Ascent



# Ascent

PVezRack® Ascent is a low ballast and north/south facing solution without rails for installation on flat roofs. With the unique design and a tilt angle of 10° and 15°, the solution is suitable for PV modules up to 2180x1100 mm and heights from 30 mm to 46 mm.

## Main Benefits

### Optimized Ballast

Ballast reduction is achieved through aerodynamically optimized construction to achieve optimum ventilation for maximum energy output. The construction is tested in boundary layer wind tunnel by the independent wind tunnel test agency.

### Efficiency

With the click connections between legs and bases, no tools are required during the legs and bases assembly. In addition, thanks to the innovative rear leg extension, storage space is reduced significantly, saving warehouse management costs.

### Compatibility

PVezRack® Ascent is a flexible solution catering for PV modules up to 2180x1100 mm and heights from 30 mm to 46 mm. Power optimisers and micro inverters can also be easily accommodated.

## Technical Details

Application	Flat roof
Setting Angle	10°/15°
Module Orientation	North/South: Landscape
Module Size	Width: 990-1100 mm Length: 1640-2180 mm Height: 30-46 mm
Snow Load	Customised
Wind Load	Customised
Material	Main Components: AL6005-T5 Wind Deflector: AL5052-H32 Fasteners: SUS 304
Certification	TUV, CE
Standard	Eurocode 0-9   AS NZS1170.2-2011   JISC8955   ASCE 7-10
Warranty	12 years



**FL-AC/10 FL-AC/15**  
Front Leg 10°/15°



**RL-AC/10**  
Rear Leg 10°



**RLE-AC**  
Rear Leg Extension

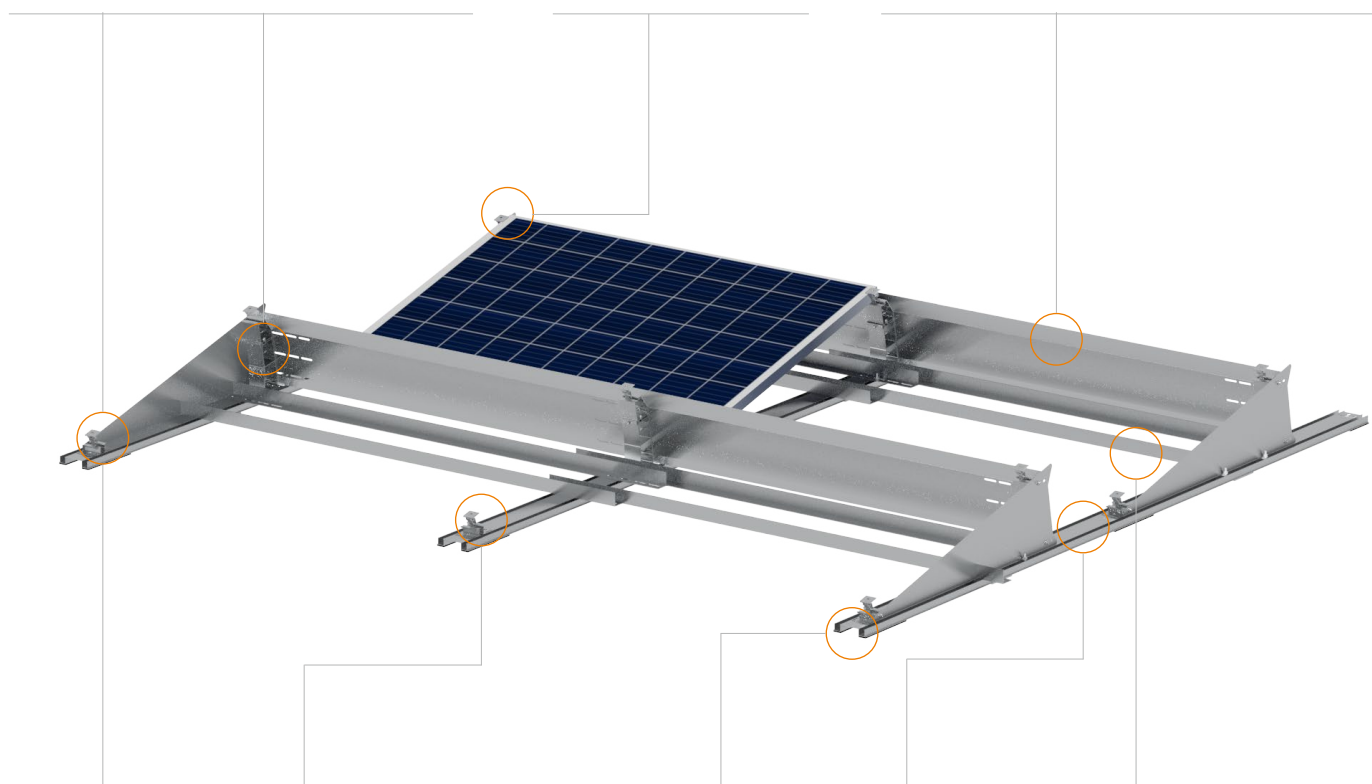


**WD-AC/XX/XXXX**  
**WD-AC/XX/XXXXM**  
Wind Deflector

Made of aluminium, Front Leg and Rear Leg are click-in installations that offer excellent corrosion resistance.

Rear Leg Extension can be easily attached to Rear Leg 10° with a single screw to achieve 15°.

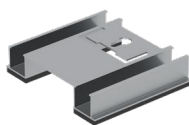
The wind deflector is fixed to the legs, normally installed on the end of array for deflecting wind and ensuring system stability.



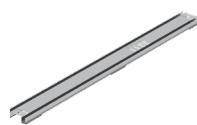
**EC-M**  
End Clamp



**IC-M**  
Inter Clamp



**SEB-AC/120**  
Start and End Base L120



**MB-AC/SN**  
Main Base, North-South

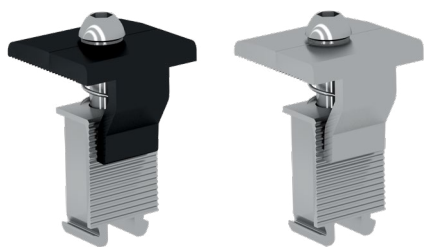


**ER-AA-50/XXXX/50**  
**BB-AC/XXXXM**  
Angle AL / Ballast Bar

The PVezRack® Inter and End clamps offer an easy-to-use and robust fixing of the PV panels.

The pre-fitted rubber pad offers a clearance between the roof surface and the base for water drainage.

With a simple and robust design, this component efficiently fixes the ballast to the mounting structure.



## EC-M30-46 EC-M30-46/BA

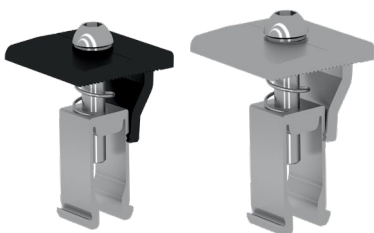
End Clamp 30-46mm, with M module

### Packaging Information

EC-M30-46: 320 units per carton, 19200 units per pallet  
EC-M30-46/BA: 264 units per carton, 15840 units per pallet

Weight: 0.059 Kg

Technical Specification		Main Components
Application	For framed PV Modules of 30-46mm in height	<ul style="list-style-type: none"> <li>- M Module 17*32.7mm</li> <li>- Corrugated L-anchor Plate</li> <li>- Hexagon socket button head screw M8*35</li> <li>- Lock washer M8</li> <li>- Spring for Universal Clamp</li> </ul>
Requirement	Needs 18mm space on each side of rails or legs	
Recommended Torque	10N·m	
Dimensions	L40mm*W41mm	
Material	Main parts: AL6005-T5 Bolts/Washers: SUS 304	
Colour	Silver and Black	



## IC-M30-46 IC-M30-46/BA

Inter Clamp 30-46mm, with M module

### Packaging Information

IC-M30-46: 320 units per carton, 19200 units per pallet  
IC-M30-46/BA: 264 units per carton, 15840 units per pallet

Weight: 0.059 Kg

Technical Specification		Main Components
Application	For framed PV Modules of 30-46mm in height	<ul style="list-style-type: none"> <li>- Universal Clamp for M Module 17*32.7mm</li> <li>- M Module 17*32.7mm</li> <li>- Hexagon socket button head screw M8*35</li> <li>- Lock washer M8</li> <li>- Spring for Universal Clamp</li> </ul>
Requirement	Needs 20mm space between PV Modules	
Recommended Torque	10N·m	
Dimensions	L40mm*W41mm	
Material	Main parts: AL6005-T5 Bolts/Washers: SUS 304	
Colour	Silver and Black	



## FL-AC/10

Ascent, Front Leg 10°

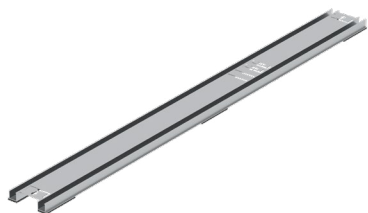
### Packaging Information

80 units per carton,  
4800 units per pallet

Weight: 0.161Kg

Technical Specification		Main Components
Application	Click into the top channel of Bases	- Front Leg 10°
Material	AL6005-T5	
Colour	Silver (anodised, no less than 10 µm, excluding machined surfaces)	



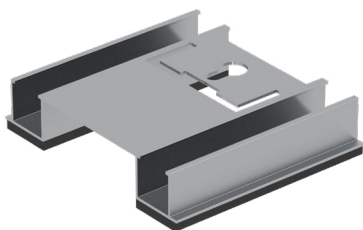


## Ascent, Main Base L1500, North-South

**Packaging Information**  
350 units per pallet

**Weight:** 1.574Kg

Technical Specification		Main Components
Application	For Clenergy PVezRack® Ascent System	<ul style="list-style-type: none"> <li>- Main Base L1500, North-South</li> <li>- Rubber Pad, 120*30*5mm</li> </ul>
Dimensions	H30mm*W135mm*L	
Material	Main Structure: AL6005-T5 Rubber Pad: EPDM	
Colour	Silver (anodised, no less than 10 µm, excluding machined surfaces)	



## SEB-AC/120

### Ascent, Start and End Base L120

**Packaging Information**  
84 units per carton, 5040 units per pallet

**Weight:** 0.153Kg

Technical Specification		Main Components
Application	For Clenergy PVezRack® Ascent System	<ul style="list-style-type: none"> <li>- Start and End Base L120</li> <li>- Rubber Pad, 120*30*5mm</li> </ul>
Dimensions	H30mm*W135mm*L120mm	
Material	Main Structure: AL6005-T5 Rubber Pad: EPDM	
Colour	Silver (anodised, no less than 10 µm, excluding machined surfaces)	



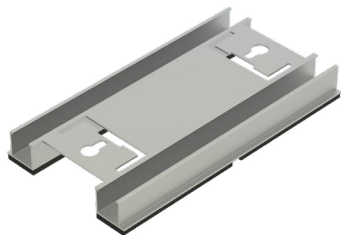
## MB-AC/EW/XXXX

### Ascent, Main Base L, East- west

**Packaging Information**  
350 units per pallet

**Weight:** Length 1940mm: 2.047Kg  
Length 2100mm: 2.207Kg  
Length 2200mm: 2.305Kg

Technical Specification		Main Components
Application	For Clenergy PVezRack® Ascent System	<ul style="list-style-type: none"> <li>- Main Base L, East-West</li> <li>- Rubber Pad, 120*30*5mm</li> </ul>
Dimensions	H30mm*W135mm*L L=1940/2100/2200mm	
Material	Main Structure: AL6005-T5 Rubber Pad: EPDM	
Colour	Silver (anodised, no less than 10 µm, excluding machined surfaces)	



## CB-AC/EW/250

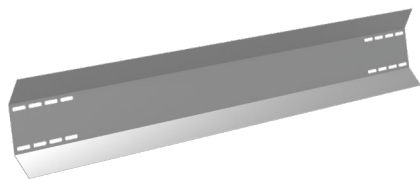
Ascent, Connection Base L250, East-west

### Packaging Information

44 units per carton,  
2640 units per pallet

Weight: 0.315Kg

Technical Specification		Main Components
Application	For Clenergy PVezRack® Ascent System	<ul style="list-style-type: none"> <li>- Connection Base L250, East-West</li> <li>- Rubber Pad, 120*30*5mm</li> </ul>
Dimensions	H30mm*W135mm*L250mm	
Material	Main Structure: AL6005-T5 Rubber Pad: EPDM	
Colour	Silver (anodised, no less than 10 µm, excluding machined surfaces)	



## WD-AC/10/1920M

## WD-AC/10/2230M

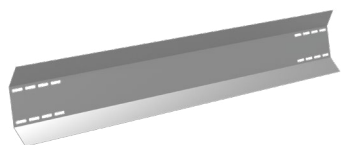
Wind Deflector 10°, L, Zn-Mg-Al Alloy Coating Steel

### Packaging Information

WD-AC/10/1920M: 75 units per carton, 640 units per pallet  
WD-AC/10/2230M: 20 units per carton, 840 units per pallet

Weight: 0.153Kg

Technical Specification		Main Components
Application	For Clenergy PV-ezRack Ascent System 10°	<ul style="list-style-type: none"> <li>- Wind Deflector 10°, L, Zn-Mg-Al Alloy Coating Steel</li> <li>- Flange Facing Self-Tapping Screw (washer) ST6.3*32</li> </ul>
Dimensions	1920 and 2230mm	
Material	Wind Deflector: MAC Steel Fasteners: SUS304	
Colour	Silver	



## WD-AC/15/1920M

## WD-AC/15/2230M

Wind Deflector 10°, L, Zn-Mg-Al Alloy Coating Steel

### Packaging Information

WD-AC/10/1920M: 75 units per carton, 640 units per pallet  
WD-AC/10/2230M: 20 units per carton, 840 units per pallet

Weight: 0.153Kg

Technical Specification		Main Components
Application	For Clenergy PVezRack® Ascent System 10°	<ul style="list-style-type: none"> <li>- Wind Deflector 10°, L, Zn-Mg-Al Alloy Coating Steel</li> <li>- Flange Facing Self-Tapping Screw (washer) ST6.3*32</li> </ul>
Dimensions	1920 and 2230mm	
Material	Wind Deflector: MAC Steel Fasteners: SUS304	
Colour	Silver	



## FL-AC/15

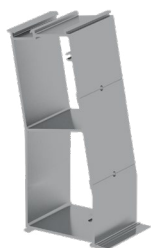
Ascent, Front Leg 15°

### Packaging Information

80 units per carton,  
4800 units per pallet

Weight: 0.163Kg

Technical Specification		Main Components
Application	Click into the top channel of Bases	- Front Leg 15°
Material	AL6005-T5	
Colour	Silver (anodised, no less than 10 µm, excluding machined surfaces)	



## RL-AC/10

Ascent, Rear Leg 10°

### Packaging Information

20 units per carton,  
1200 units per pallet

Weight: 0.307Kg

Technical Specification		Main Components
Application	Click into the top channel of Bases	- Rear Leg 10°
Material	AL6005-T5	
Colour	Silver (anodised, no less than 10 µm, excluding machined surfaces)	



## RLE-AC

Ascent, Rear Leg Extension

### Packaging Information

48 units per carton,  
2880 units per pallet

Weight: 0.151Kg

Technical Specification		Main Components
Application	For Ascent system, extend to 15° when assembled with 10° Rear Leg	- Rear Leg Extension - Grounding Lug Bolt II
Material	Main parts: AL6005-T5 Bolts: SUS 304	
Colour	Silver (anodised, no less than 10 µm, excluding machined surfaces)	



**BB-AC-1920M**  
**BB-AC-2230M**

Ballast Bar , Zn Mg-Al Alloy Coating Steel

**Packaging Information**  
1280 units per pallet

**Weight:** WD-AC/10/1920M: 2.208Kg  
WD-AC/10/2230M: 2.519Kg

Technical Specification		Main Components
Application	For Clenergy PVezRack® Ascent System	<ul style="list-style-type: none"><li>- Angle AL-50.8*50.8*L, with 50mm slot hole</li><li>- T-head bolt M8*25</li><li>- Hexagon nut with flange M8</li></ul>
Dimensions	1920 and 2230mm	
Material	Main Structure: MAC Steel Fasteners: SUS304	
Colour	Silver	











## **PV-ezRACK®**

### **Clenergy**

999-1009 Min'an Rd,  
Huoju Hi-tech Ind. Dev. Zone  
Xiang'an District 361101,  
Xiamen, Fujian, China

**Phone:** +86 592 311 0088  
**Email:** [sales.eu@clenergy.com](mailto:sales.eu@clenergy.com)  
**Web:** [www.clenergy.com](http://www.clenergy.com)

 @ClenergyGlobal / @ClenergyClub / ClenergyAUS / @ClenergyThailand    @Clenergy  
 @Clenergy\_global  @ClenergyClub

