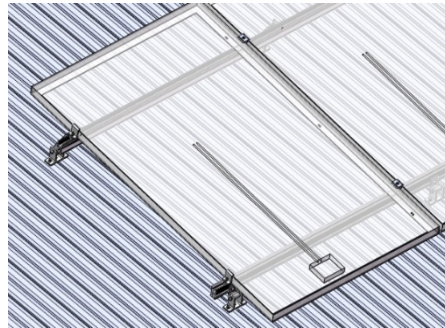


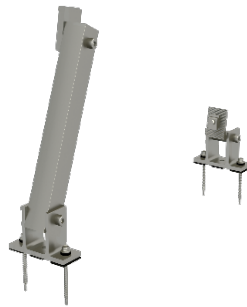
SolarRoof, Fixed Tilt Legs, preassembly

Assembly



Install on tin roof

Component



Fixed Tilt Legs, preassembly
Part No.: ER-TL-5/PS, ER-TL-10/PS

Technical Specification

Screw Specification	4 x Buildex 14-11 x 70 (14 gauge, 6.3 mm, 11 TPI, 70 mm long) Hex Head Zips screw
Weight	ER-TL-5/PS, 0.793 kg ER-TL-10/PS, 0.877 kg
Packaging	ER-TL-5/PS, 20 units per carton ER-TL-10/PS, 14 units per carton
Material	Tilt Legs: AL6005-T5; Fasteners: SUS304
Color	Silver (half-anodized no less than 10 µm)
Earthing	Yes
Standard	AS NZS1170.2-2011 National Building Code of Canada (NBC) 2020