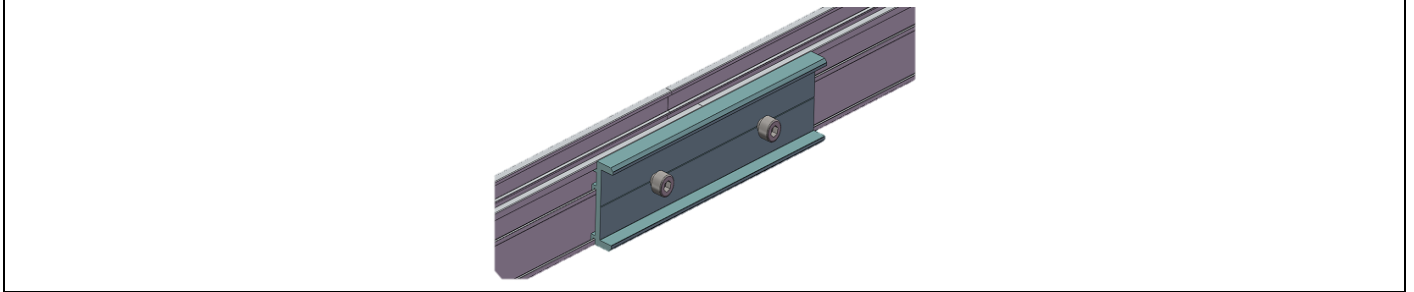
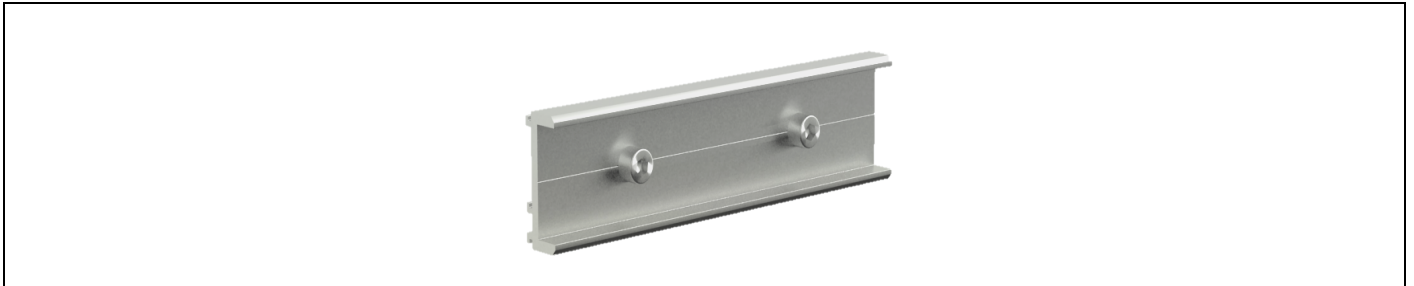


## Splice for ECO Rail

### Assembly

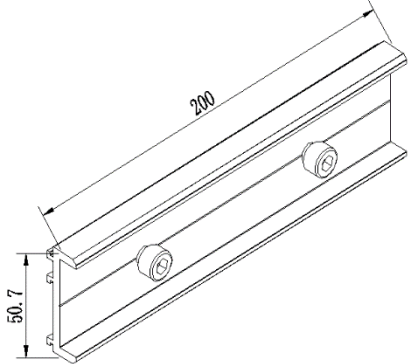


### Component



Splice for ECO Rail  
Part No.: ER-SP-ECO

### Technical Specification

|             |  |   |
|-------------|--|---|
| Application | Splice for ECO Rail and Cutter Rail                              |  |
| Dimensions  | L200mm*H50.7mm   |   |
| Weight      | 0.190 kg   |   |
| Packaging   | 24 units per pack; 4 packs (96 units) per carton                 |   |
| Material    | Main parts: AL6005-T5<br>Fasteners: SUS 304                      |   |
| Color       | Silver (anodized, no less than 10µm)                             |   |
| Standard    | AS NZS1170.2-2011<br>National Building Code of Canada (NBC) 2020 |   |