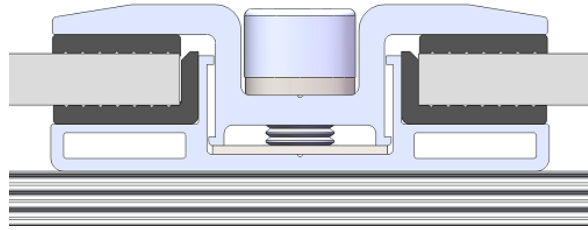


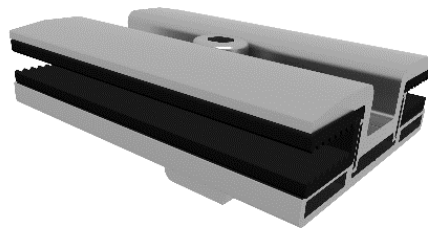
Inter Clamp for 6.8mm Frameless Module (glued EPDM)

Assembly



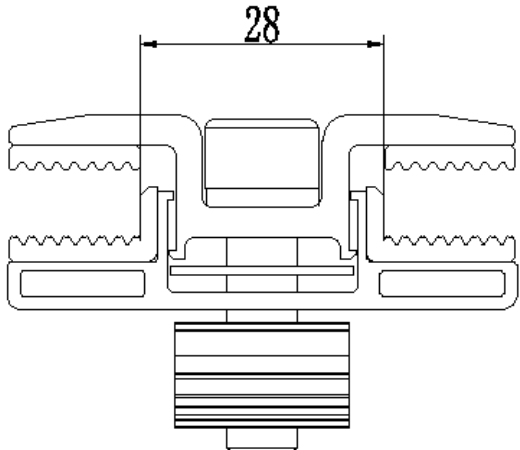
Fixing the frameless panel with Inter Clamp

Component



Inter Clamp for Frameless Module (glued EPDM)
Part No.: IC-FL/GE/X/XX

Technical Specification

Application	Inter Clamp is for frameless PV Modules	
Requirement	IC-FL/GE/X/XX needs 28 mm space between PV Modules	
Weight	IC-FL/GE/6.8/80: 0.144kg IC-FL/GE/6.8/120: 0.198kg IC-FL/GE/6.8/150: 0.241kg IC-FL/GE/6.8/200: 0.310kg	
Packaging	IC-FL/GE/6.8/80: 32 units per pack, 4 packs (128 units) per carton IC-FL/GE/6.8/120: 24 units per pack, 4 packs (96 units) per carton IC-FL/GE/6.8/150: 16 units per pack, 4 packs (64 units) per carton IC-FL/GE/6.8/200: 12 units per pack, 4 packs (48 units) per carton	
Material	Main Structure: AL6005-T5 Fasteners: SUS 304 Rubber Mat: EPDM	
Color	Silver (half anodized, no less than 10µm)	
Standard	AS NZS1170.2-2011 National Building Code of Canada (NBC) 2020	