



Ascent/Ascent Wings



Ascent/Ascent Wings

The PVezRack® Ascent is a low ballast, south/north, east-west facing solution without rails for PV installation on flat roofs. With the special design and a tilt angle of 10° and 15°, Ascent is suitable for pv module length up to 2350mm, width up to 1134mm, height from 28mm to 46mm.

Main Benefits

Ballast Optimized

Ballast reduction through aerodynamic optimized construction. Also tested in boundary layer wind tunnel by the independent wind tunnel test agency, to achieve optimum ventilation for maximum energy output.

Easy and Quick Installation

With the click connections between Legs and Bases, no tools are used during the Legs and Bases assembly, significantly reduce installation labor. The storage space is greatly reduced due to the innovative Rear Leg Extension, thereby saving the cost of warehouse management.

Compatibility

Available with a module widths up to 1134mm, PVezRack® Ascent offers flexible solutions and suitable for all framed PV panels with height from 28 to 46mm. Power optimizer, micro inverter can be easily accommodated.

Technical Details

Application	Flat roof
Setting Angle	10°/15°
Module Orientation	North/South, East-West: Landscape
Module Size	Length: up to 2350 mm Width: 990-1134 mm Height: 28-46 mm
Snow Load	Customised
Wind Load	Customised
Material	Main Components: AL6005-T5 Wind Deflector: MAC Steel Fasteners: SUS 304
Certification	TUV CE Wind Tunnel Test (Wacker Ingenieure GmbH)
Standard	Eurocode 0-9 AS NZS1170.2 JISC8955 ASCE 7-10
Warranty	12 years

Ascent



FL-AC/10 FL-AC/15
Front Leg 10°/15°

Made of aluminium, Front Leg and Rear Leg are click-in installations that offer excellent corrosion resistance.



RL-AC/10
Rear Leg 10°



RLE-AC
Rear Leg Extension
Rear Leg Extension can be easily attached to Rear Leg 10° with a single screw to achieve 15°.



WD-AC/XX/XXXX/M
Wind Deflector

The wind deflector is fixed to the legs, normally installed on the end of array for deflecting wind and ensuring system stability.

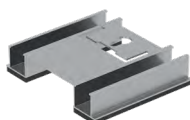


EC-M28-46/L50
End Clamp



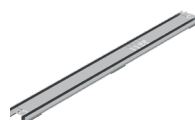
IC-M28-46/L50
Inter Clamp

The PVezRack® End and Inter clamps offer an easy-to-use and robust fixing of the PV panels.



SEB-AC/120
Start and End Base L120

The pre-fitted rubber pad offers a clearance between the roof surface and the base for water drainage.



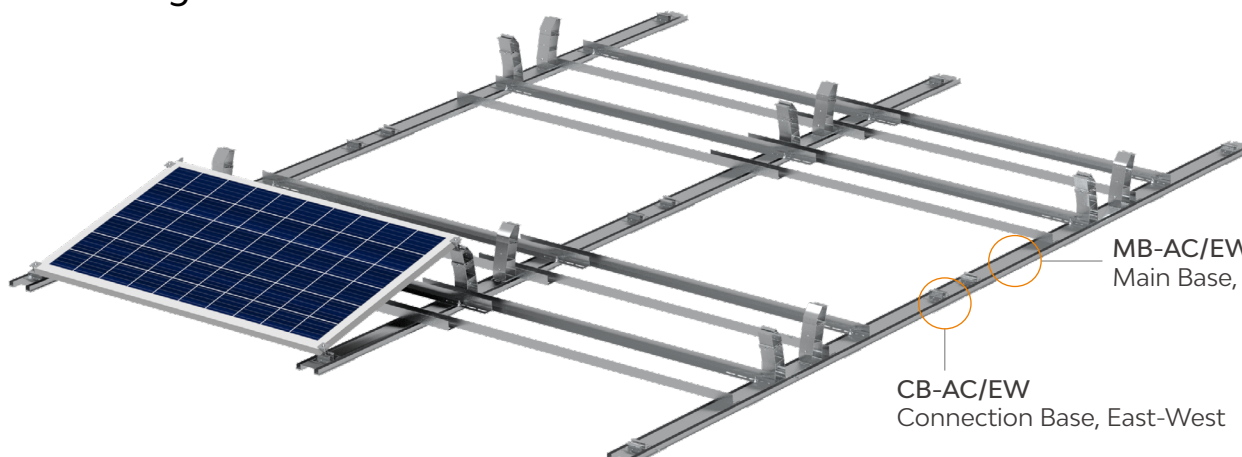
MB-AC/SN
Main Base, North/South



BB-AC/XXXX/M
Ballast Bar

With a simple and robust design, this component efficiently fixes the ballast to the mounting structure.

Ascent Wings



MB-AC/EW
Main Base, East-West

CB-AC/EW
Connection Base, East-West







PV-ezRACK®

Clenergy

999-1009 Min'an Rd,
Huoju Hi-tech Ind. Dev. Zone
Xiang'an District 361101, Xiamen,
Fujian, China

Phone: +86 592 311 0088
Email: sales@clenergy.com
Web: www.clenergy.com

 @ClenergyGlobal / @ClenergyClub / @ClenergyAUS / @ClenergyThailand
 @Clenergy_global  @Clenergy  @Clenergy

A Clenergy Technologies Company

