

RUNNUR



Product Brochure

Ver 2.1 / Last Updated - Oct 2023

RUNNUR

At **RUNNUR** our heritage is founded on a pioneering spirit and a culture of collaboration. We've built our legacy with a future focus that still stays true to the fundamentals of sustainable design. We have built a collaborative culture amongst stakeholders from across our industry, which was critical for us to deliver on our mission. We offer the building, infrastructure, IT, Oil & Gas industries and many more a progressive alternative for their cable management requirements.

RUNNUR is the latest product line from **Clenergy Projects Australia**, whose teams have been designing products since 2007 and has grown into a nationwide Australian company with products sold across APAC. Our ongoing research and development are backed by a culture of open innovation, excellence through quality and being service focused.

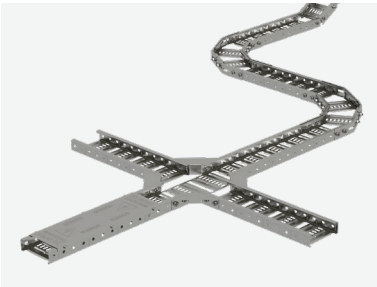
We develop for optimal functionality, with an emphasis on simplicity for aesthetically brilliant projects. Our technically advanced cable trays are complemented by our tray covers and accessories, as well as our unparalleled logistics & operations team, with an emphasis on customer service.



Clenergy Projects Australia is a veteran manufacturer with startup roots in Melbourne, Australia, we have earned a solid reputation throughout the nation and across APAC, because of a proven track record of success.

We bring our expertise to the table to provide your company and engineers with creative insights, and attention to detail.

CLENERGY PROJECTS AUSTRALIA



INDEX

Cable Tray Systems	P4 - P5
CR1 Cable Tray	P6 - P7
MT Cable Tray	P8 - P9
Tunnel Rail Tray	P10
The Brute - Cable Clip for Holding 2 Large Cables	P11
WX Series, Walkway	P12 - P13
RUNNUR Apparel	P14 - P15

Cable Tray Systems

RUNNUR's CR1 series cable tray system is designed for **functionality, with an emphasis on simplicity for cost-effective projects.**

Designed and tested for Australian nationwide environments, and **the CR1 series** cable tray features a MAC finish - resulting in unmatched strength and reliability. The trays are designed to support up to 113 kgs.

The MT Rail series is perforated channel cable tray for commercial and industrial instrumentation and small power cable management applications.

Available in mill finish aluminium option. Additionally, the internal cable area is free of sharp edges and connection hardware which is complimented with a full range of accessories.



CABLE TRAY SYSTEMS

Corrosion Resistance

RUNNUR by Clenergy is a robust and high corrosion resistance cable management system designed to handle bulk wires, improve aesthetics and safety in establishments.

The RUNNUR Cable Trays, have been developed to manage information and energy cables in establishments where one can easily achieve tees, bends, risers, and crosses by using only small accessories.

MAC Steel

This finish provides highly corrosive resistance to an outdoor environment. Compared to hot dipped galvanized material, MAC finish receives mixing and bonding several times higher with Magnesium Zinc and Aluminium. If your application is for a long-term outdoor exposure, MAC Steel is the desired choice.

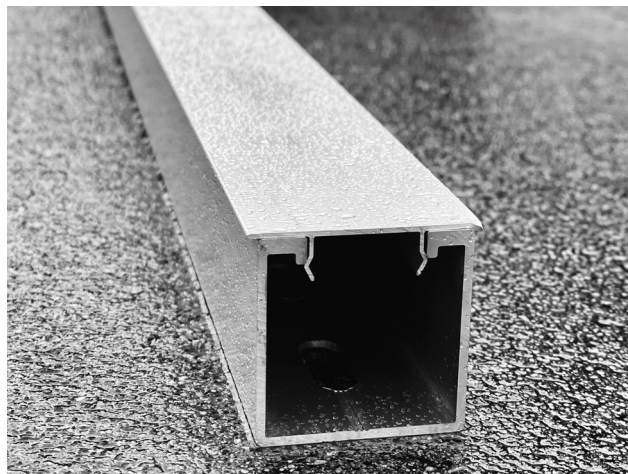
Stainless Steel Grade 304

Stainless Steel Grade 304 has excellent resistance to a wide range of atmospheric environments and many corrosive media. It is a highly durable metal known for its impressive hardness, suitable for making different types of fasteners.

Aluminium

Aluminium has high corrosion resistance. It spontaneously forms a thin but effective oxide layer on all surfaces exposed to the atmosphere preventing further oxidation.

[View all products ►](#)

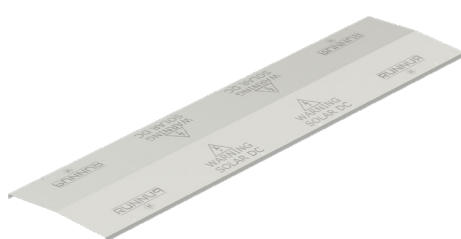
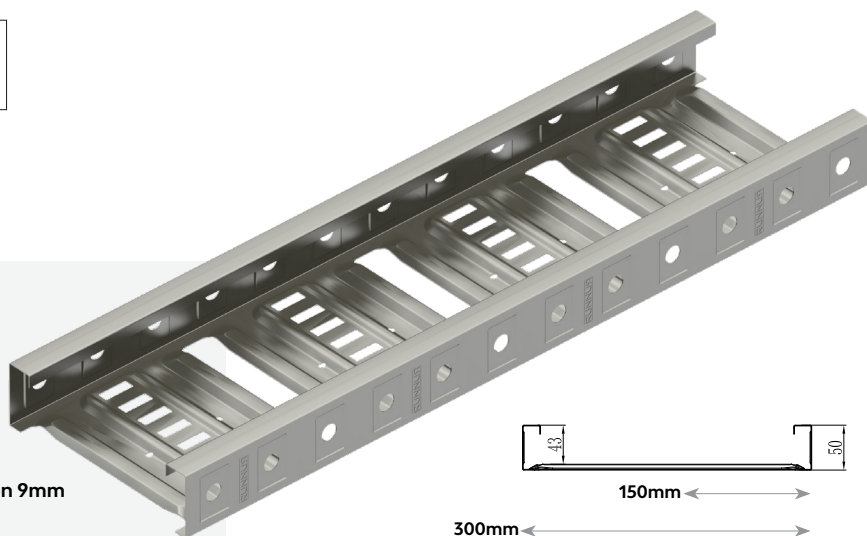


CABLE TRAY SYSTEMS

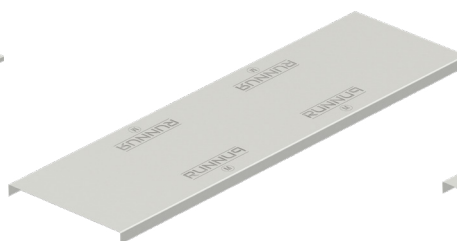
CR1 CABLE TRAY

Load Rating and Deflection

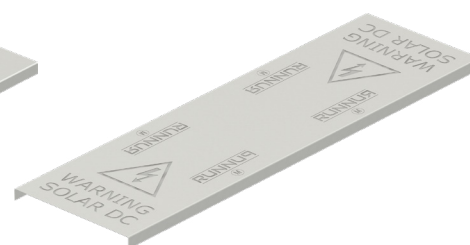
SPAN	3.0m	28kg	Deflection 32mm
	2.5m	40kg	Deflection 22mm
	2.0m	63kg	Deflection 15mm
	1.5m	113kg	Deflection 9mm
	LOAD PER METER		



Peak Cover with "Warning Solar DC"
CR-CTPCS300M



Flat Plain Cover
CR-CTFC150M or CR-CTFC300M



Flat Cover with "Warning Solar DC"
CR-CTFCS150M

Cable Tray

Part No. (Ordering Code)	Cable Laying Width (mm)	Cable Laying Depth (mm)	Overall Width (mm)	Side Rail Height (mm)	Weight (kg)	Packaging
CR1-CT150M	150	43	172	50	1.887/m	150 pcs per pallet
CR1-CT300M	300	43	322	50	2.707/m	84 pcs per pallet

Notes:

1) CR1 has been tested in accordance with NEMA VE1 standard by a NATA certified testing facility. The deflection for continuous span is based on physical test results for easy reference. However, it cannot be applied to end spans. Please refer to NEMA VE2 installation guidelines for cable tray installations.

2) Supplied in 3m length.

3) Standards --- AS/NZS 4600, AS/NZS 1170.0, AS/NZS 1170.1, NZS 1170.5, NZS 4219

Flat and Peaked Cover

Part No. (Ordering Code)	Nominal Width (mm)	Overall Width (mm)	Length (mm)	Weight (kg)	Packaging
CR-CTFC150M CR-CTFCS150M	150	175	3000	0.954/m	150 pcs per pallet
CR-CTFC300M CR-CTPCS300M	300	325	3000	1.661/m	84 pcs per pallet

Note:

Standards --- AS/NZS 4600 (Labelling / Signs to AS/NZS5033)

Accessories

Clenergy RUNNUR Cable Tray accessories is available to complement the Cable Tray and make it easy to achieve tees, bends, risers, and crosses.



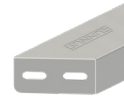
CR1-SPM Splice Plate (*1)

2 Splices required per length of tray. Order fasteners separately for installation:
2 x CR-SBS
2 x CR-CS



CR1-RM Riser Link (*1)

6 Riser Links required to perform a 90° set. Order fasteners separately for installation (per Riser Link):
2 x CR-SBS
2 x CR-CS



CR1-TM Tee/Cross Bracket (*1)

2 TX Brackets required to make a tee; 4 required to make a cross. Order fasteners separately for installation (per Tee/Cross Bracket):
4 x CR-SBS
4 x CR-CS



CR1-HM Hold Down Unit (*1)

Order fasteners separately for installation



CR-I-01 Tin Interface for Cable Tray (*2)

Bolts & washers included



CR1-RPM Radius Plate (*1)

Standard 2.0m length. Order fasteners separately for installation. Approximate length required to make a 150mm radius bend:

Tray Width	Length Required	Fasteners Required
150mm	0.7m	6
300mm	0.9m	6



CR-SBS Splice Bolt M10*18 (*3)



CR-CS Counterbore Nut (*3)



CR-DM/BWS Diamond Module Assembly with Bolt M8*20 and Large Washer (*3)

Note:

Standards --- (*1) AS/NZS 4600, (*2) AS/NZS1866, (*3) AS2837

Order Method

Example

Cable Tray & Cover

CR1-CT 150 M

Select Cable Tray

- CR** Clenergy RUNNUR Series
- CR1** Clenergy RUNNUR Series 1

Select Component

- CT** Cable Tray
- CTFC** Cable Tray Flat Cover
- CTFCS** Cable Tray Flat Cover with "Warning Solar DC"
- CTPCS** Cable Tray Peaked Cover with "Warning Solar DC"

Select Width (mm)

- 150**
- 300**

Select Finish

- M** MAC

Accessories

CR1-SP M

Select Cable Tray

- CR** Clenergy RUNNUR Series
- CR1** Clenergy RUNNUR Series 1

Select Accessory

- SP** Splice Plate
- R** Riser Link
- T** Tee/Cross Bracket
- RP** Radius Plate
- H** Hold Down Unit
- SB** Splice Bolt
- C** Counterbore Nut

Select Finish

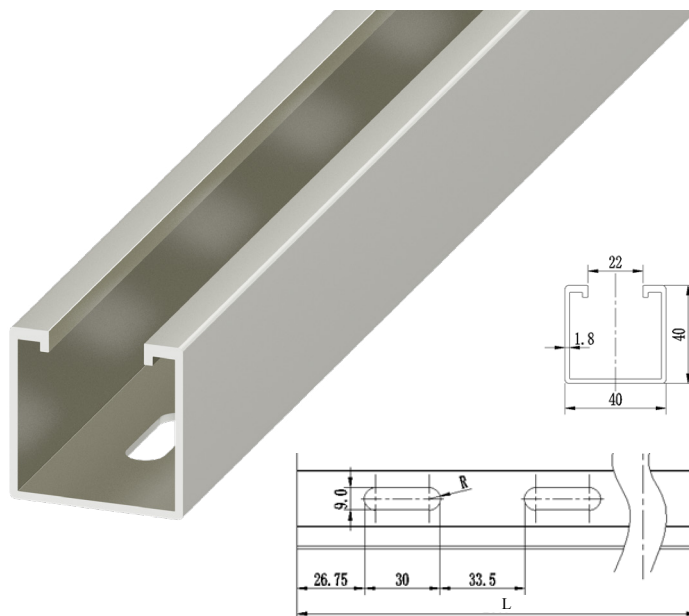
- M** MAC
- S** Stainless Steel

CABLE TRAY SYSTEMS

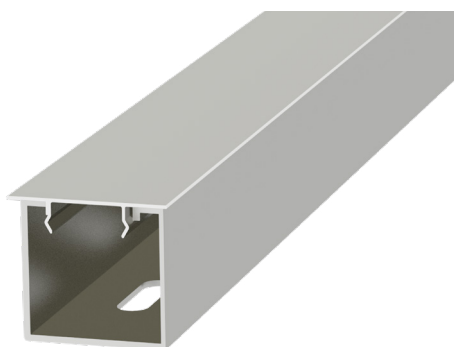
MT CABLE TRAY

Load Rating and Deflection

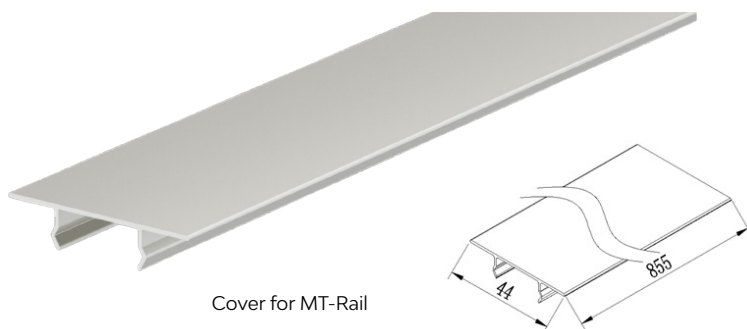
SPAN	2.5m	38kg
	2.0m	59kg
	1.5m	106kg
	1.0m	239kg



Assembly



Components



Cable Tray

Part No. (Ordering Code)	EZ-CT-40/40/2560, CR-CT-40/40/3000		
Application	Fix Solar DC Cables	Packaging	1020 pcs per pallet
Fixing Method	Fix on the ECO or T rail with Z module	Material	AL/6005-T5
Dimensions	L2560 or 3000mm*W40mm*H40mm	Finish	Mill Finish
Weight	0.676 kg/m	Standard	AS/NZS1866

Cover

Part No. (Ordering Code)	CO-MT/855		
Application	Cover for MT-Rail Cable Tray	Packaging	30 units per carton
Fixing Method	Click in MT-Rail Cable Tray	Material	AL/6005-T5
Dimensions	L855mm*W44mm*H9.52mm	Finish	Mill Finish
Weight	0.135kg	Standard	AS/NZS1866

Accessories



CR-I-01
Tin Interface for Cable Tray



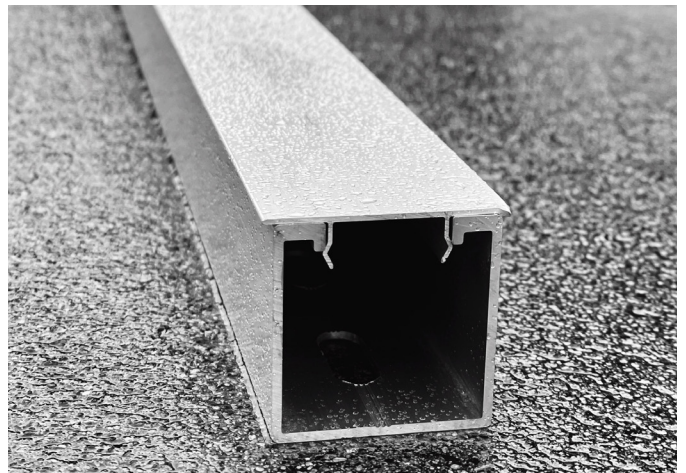
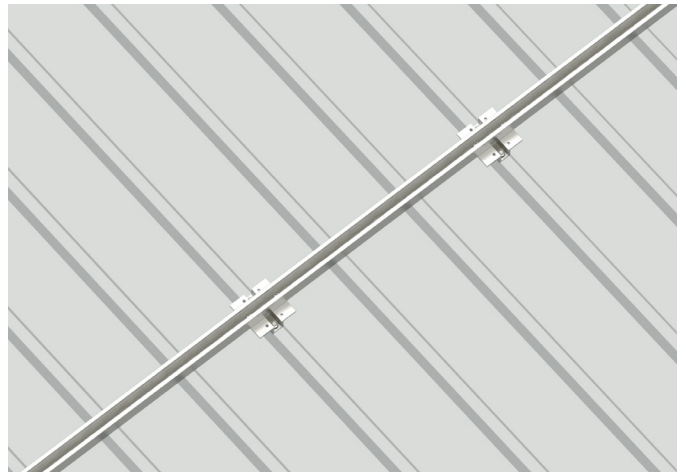
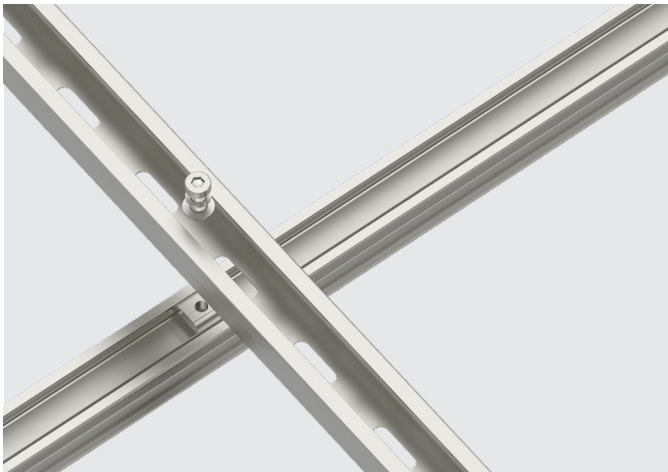
EZ-SP-MT/CT
Splice Plate for MT-Rail Cable Tray



CR-DM/BWS
Diamond Module Assembly
with Bolt M8*20 and Large
Washer

Note:

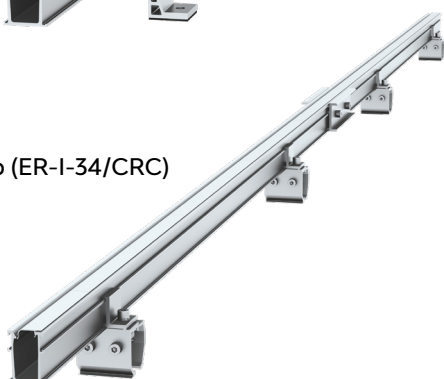
Standards --- AS/NZS 1866, AS 2837



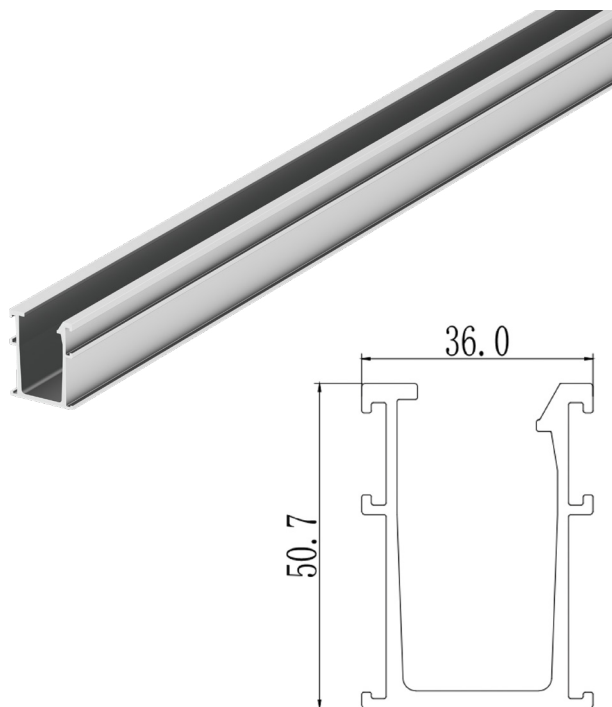
TUNNAL RAIL TRAY

Assembly

Install with L feet

Install with
Klip-lok Clamp (ER-I-34/CRC)

Component



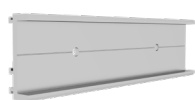
Technical Specification

Part No.(Ordering Code)	CR-RT-TUN/4400/MF, CR-RT-TUN/4600/MF
Dimension	W36.0mm* H50.7mm*4400 or 4600mm
Packaging	96 pcs per pack; 4 packs (384 pcs) per pallet
Weight	0.947 Kg/m
Material	AL6005-T5
Color	Silver
Finish	Mill Finished
Standard	AS NZS1170.2

Accessories



SCO-ECO/380
TUNNAL Rail Tray Cover,
380 mm



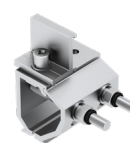
ER-SP-ECO
Splice Plate



ER-I-05A/EZC/ECO
Tin Interface A with
ezClick connection



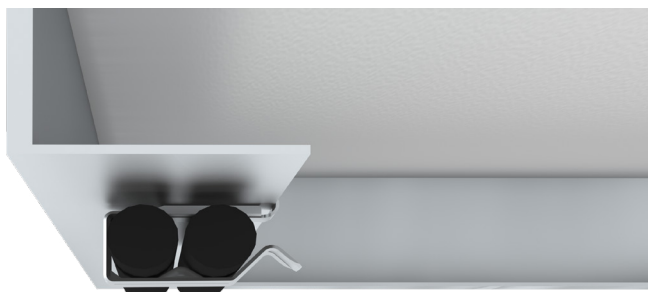
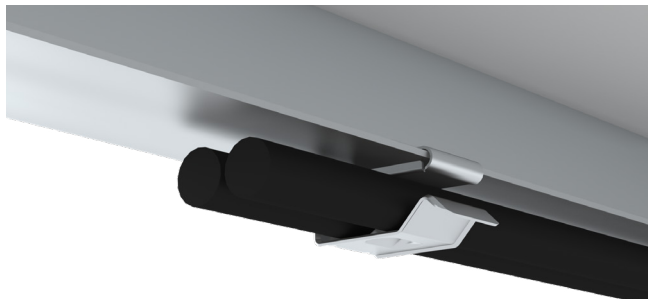
ER-I-05A/EZC/MAX
Tin Interface A with
ezClick connection and
double chambers



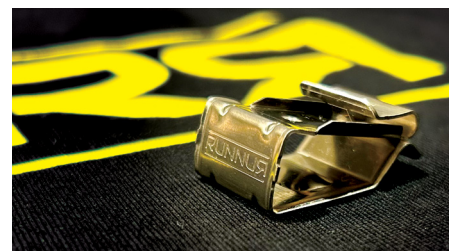
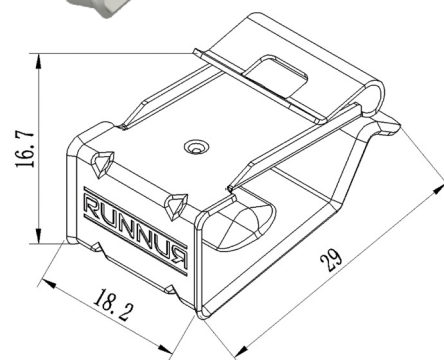
ER-I-34/CRC
Brooklyn Klip-lok Interface
pre-assembly with
Cross Connector Clamp

THE BRUTE - CABLE CLIP FOR HOLDING 2 LARGE CABLES

Assembly



Component



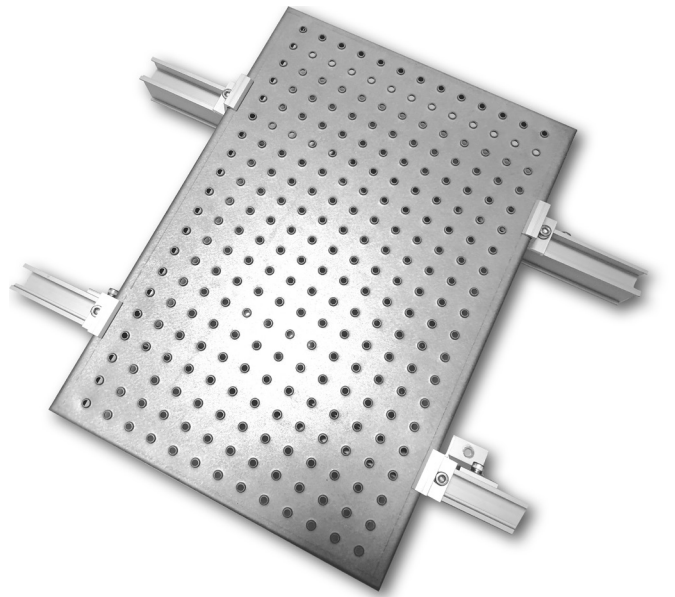
Technical Specification

Part No.(Ordering Code)	CR-BRU/2
Fixing Method	Fixed on the frame of PV module, holding two cables
PV Module Type	For framed PV Module only
PV Module Frame Thickness	1.0-2.0 mm
Min Inserted Depth	6 mm
Max Cable Size	10 mm OD
Dimensions	L29mm*W18.2mm*H16.7mm
Weight	6 g
Packaging	35 pcs per bag; 20 bags (700 pcs) per carton; 88 cartons (61,600 pcs) per pallet
Material	SUS304 (3/4H)
Color	Silver

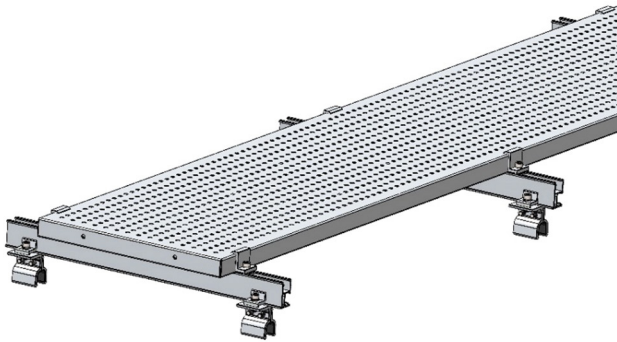
WX SERIES, WALKWAY

Roof walkways are designed to assist in ongoing maintenance, and also to protect roofs during walking. Our Walkway is compatible with all our products: ECO Rail, B50 Rail, DT Rail, L-feet, etc. For increased versatility, we offer multiple choice of length, width. The product can be applied to go alongside any roofing installation, for example solar or HVAC systems.

Speak to a Clenergy representative for more information.



Assembly



Components

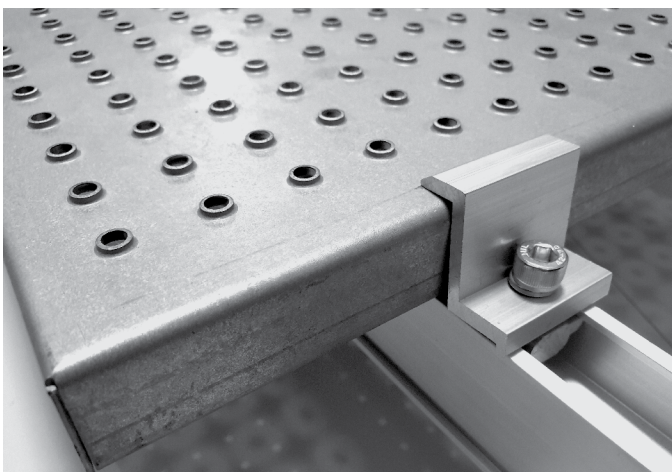
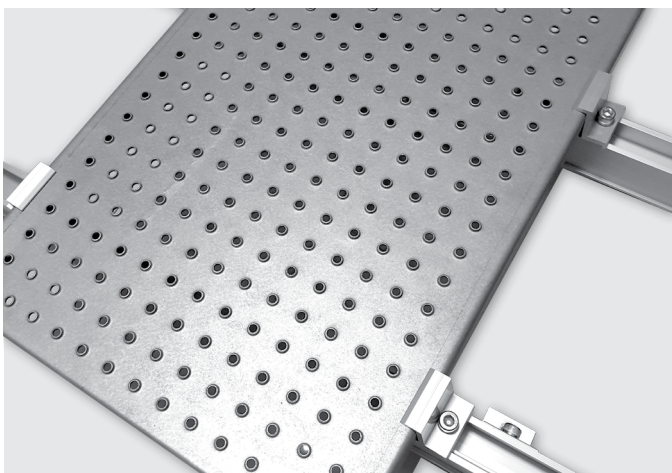


Clenergy RUNNUR WX Series, Walkway, MAC Steel
Part No.: CR-WX35/XXX/XXXXM, CR-WX40/XXX/XXXXM

Technical Specification

Fixing method	Fixing on the Rail with clamps
Dimensions	Length: 2000 or 3000mm / Width: 350 or 400mm / Height: 35 or 40mm
Weight	CR-WX35/350/2000M: 10.2 Kg CR-WX35/400/2000M: 11.3 Kg CR-WX40/400/3000M: 17.1 Kg
Material	MAC Steel
Color	Silver
Standard	ASCE 7-10 AS NZS1170.2 EN1991 JISC8955-2017
Warranty	12 years

*Sample images above are illustrative. Please refer technical specifications for actual dimensions.



This image shows a single sheet of white paper with horizontal blue or grey ruling lines. The lines are evenly spaced and run across the width of the page. There are approximately 20 lines visible. The paper has a slight shadow on the right side, suggesting it's resting on a surface.

RUNNUR



Merch Store



APPAREL

 @runnuncabletrays   @runnur.clenergy  @runnur

T: +86 (0592) 3110088 | E: sales@clenergy.com | W: www.clenergy.com





A Cleenergy Technologies Company