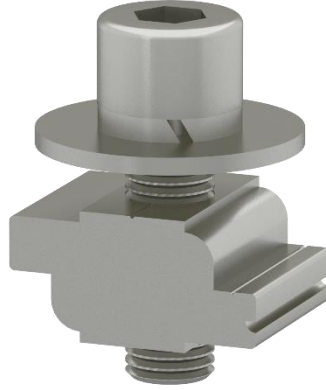


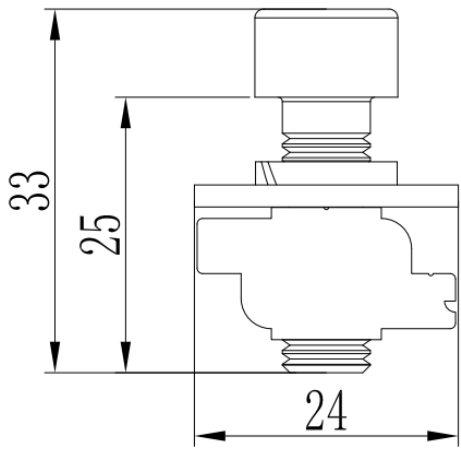
## Z-module Assembly with Bolt and Large Washer

### Component



Z-module Assembly with Bolt and Large Washer  
Part No.: EZ-Z-STBW (bar code: 13-14021-015)

### Technical Specification

<b>Application</b>	Fix microinverter or optimizer on Clenergy ECO or T rail	
<b>Screw Specification</b>	Hexagon socket head cap screw M8*25	
<b>Dimensions</b>	W24mm*H33mm	
<b>Packaging</b>	400 units per pack, 2 packs (800 units ) per carton	
<b>Packaging Dimension</b>	L405*W270*H180mm (carton dimension)	
<b>Weight</b>	0.028 Kg 22.86 Kg (carton)	
<b>Material</b>	Z-module: AL6005-T5; Bolts/Washer: SUS304	
<b>Color</b>	Silver (half-anodized no less than 10 μm)	
<b>Standard</b>	NBC 2020   OBC 2012/2022 & OBC 2024   BCBC 2018 & BCBC 2024   NBC(AE) 2019 & NBC(AE) 2023   NBC 2010 (Manitoba Amendments)   CAN/CSA S157-17   CAN/CSA S16-14 (R2019)	